

Slagelse gangbro



RAMBOLL



Dissing+Weitling



Agenda

1. Kort præsentation af HSM
2. Projekt-organisation
3. Video om Slagelse gangbro
4. Tidsplan for projektering, udførelse og montage
5. Produktion
6. Overfladebehandling
7. Montage
8. Færdiggørelse

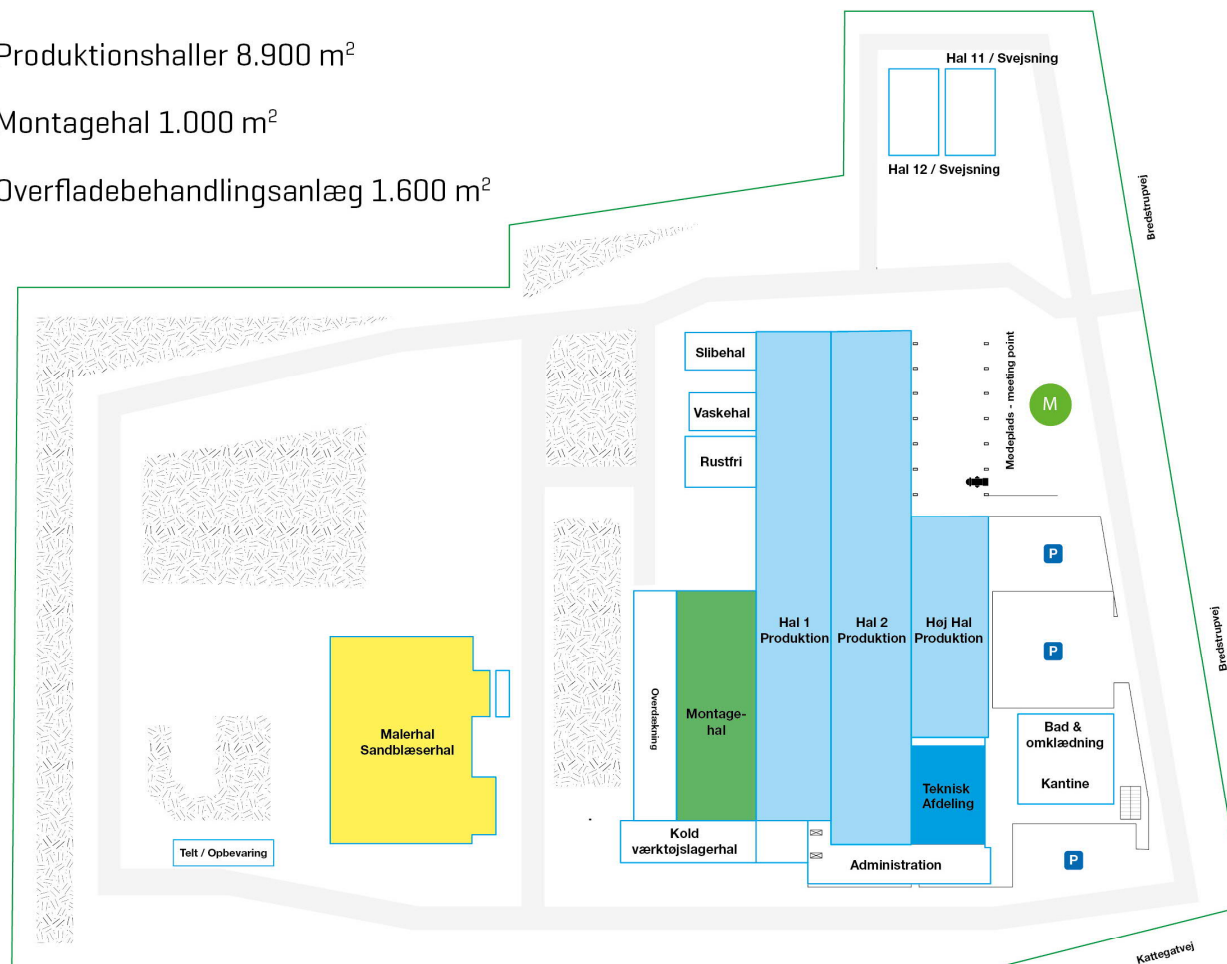


Situationsplan

1 HSM Industri

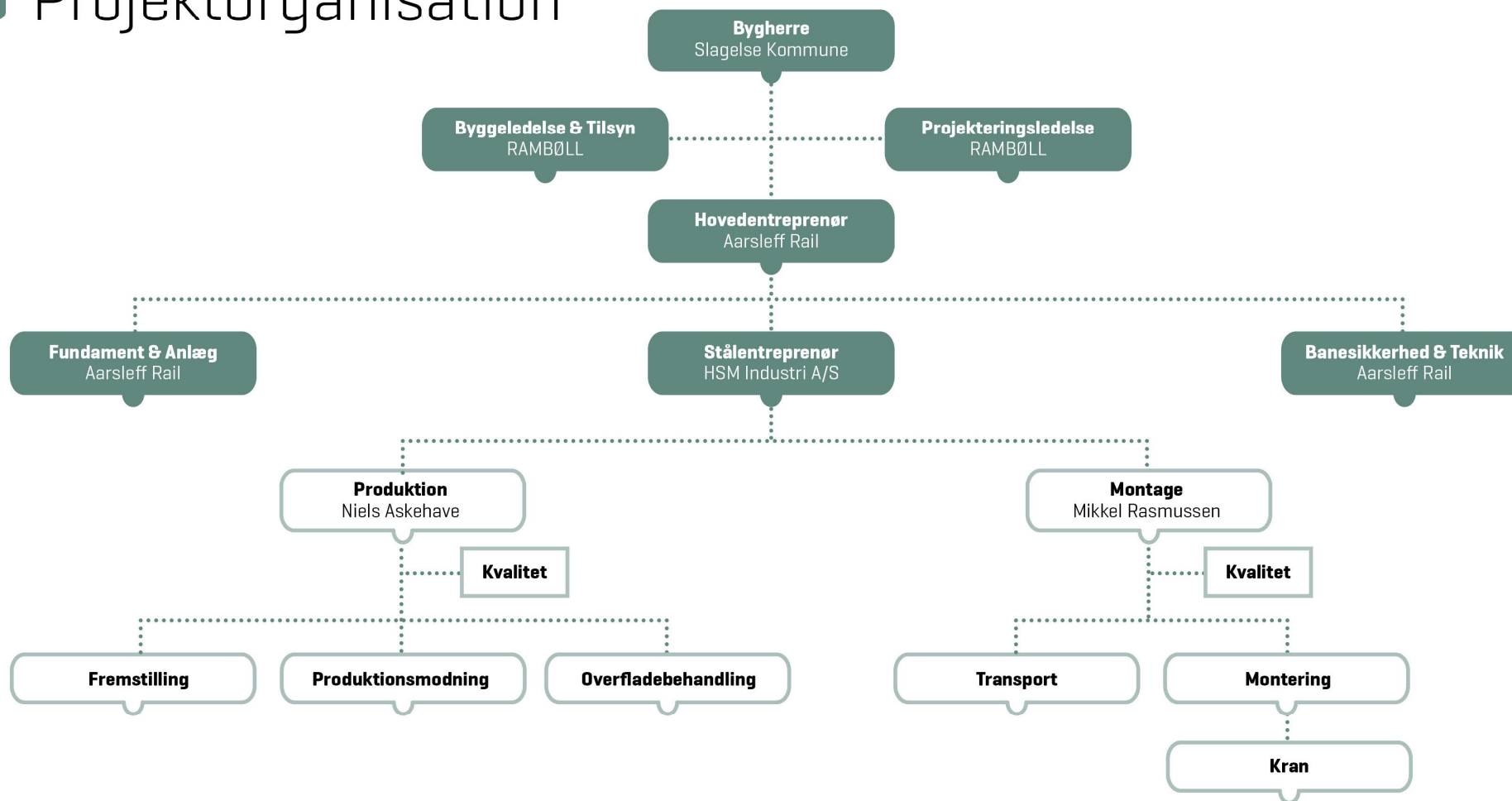


- Produktionshaller 8.900 m²
- Montagehal 1.000 m²
- Overfladebehandlingsanlæg 1.600 m²

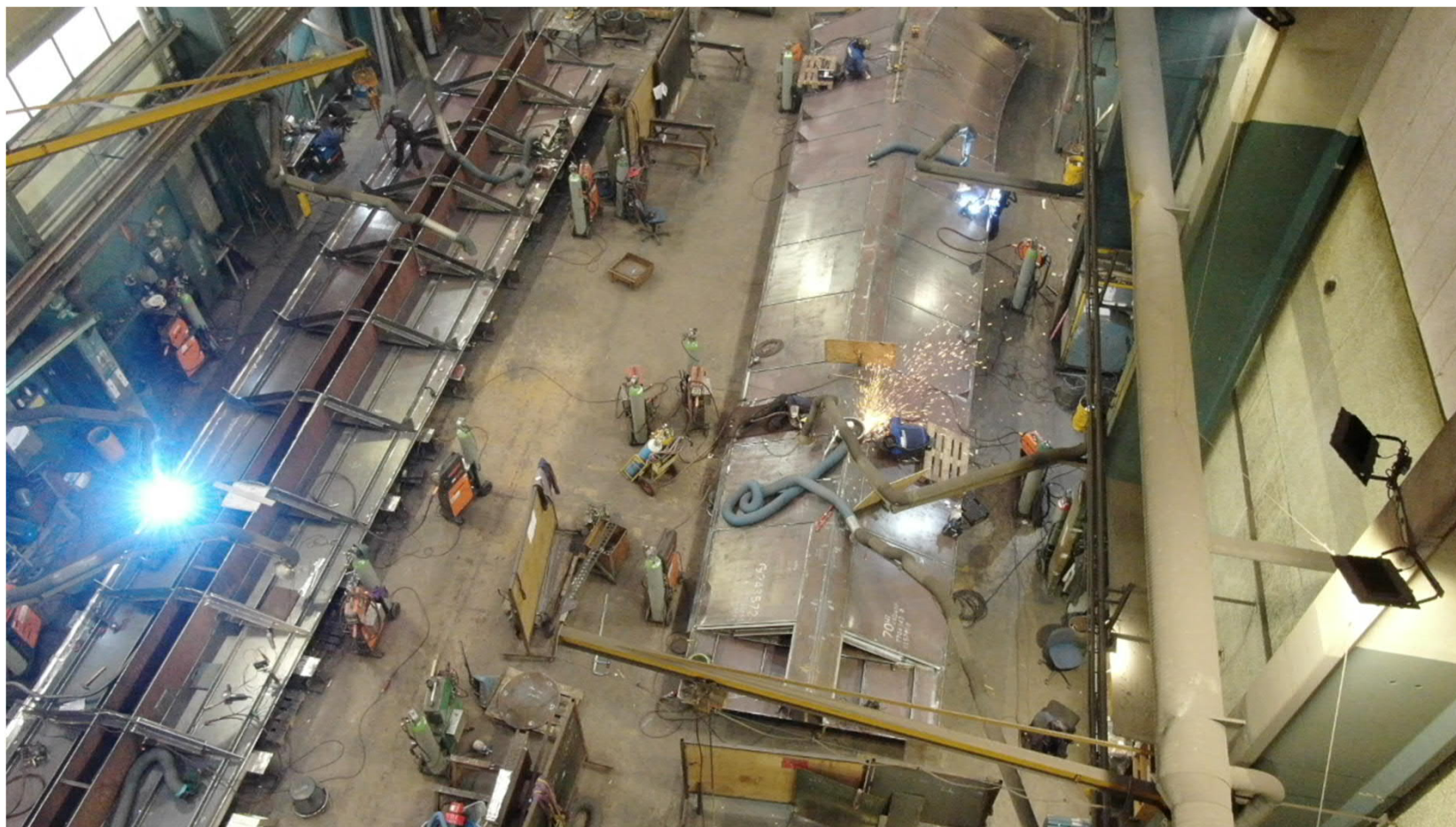


Samlet produktionsareal 11.500 m²

2.0 Projektorganisation



3.0 Video Slagelse gangbro



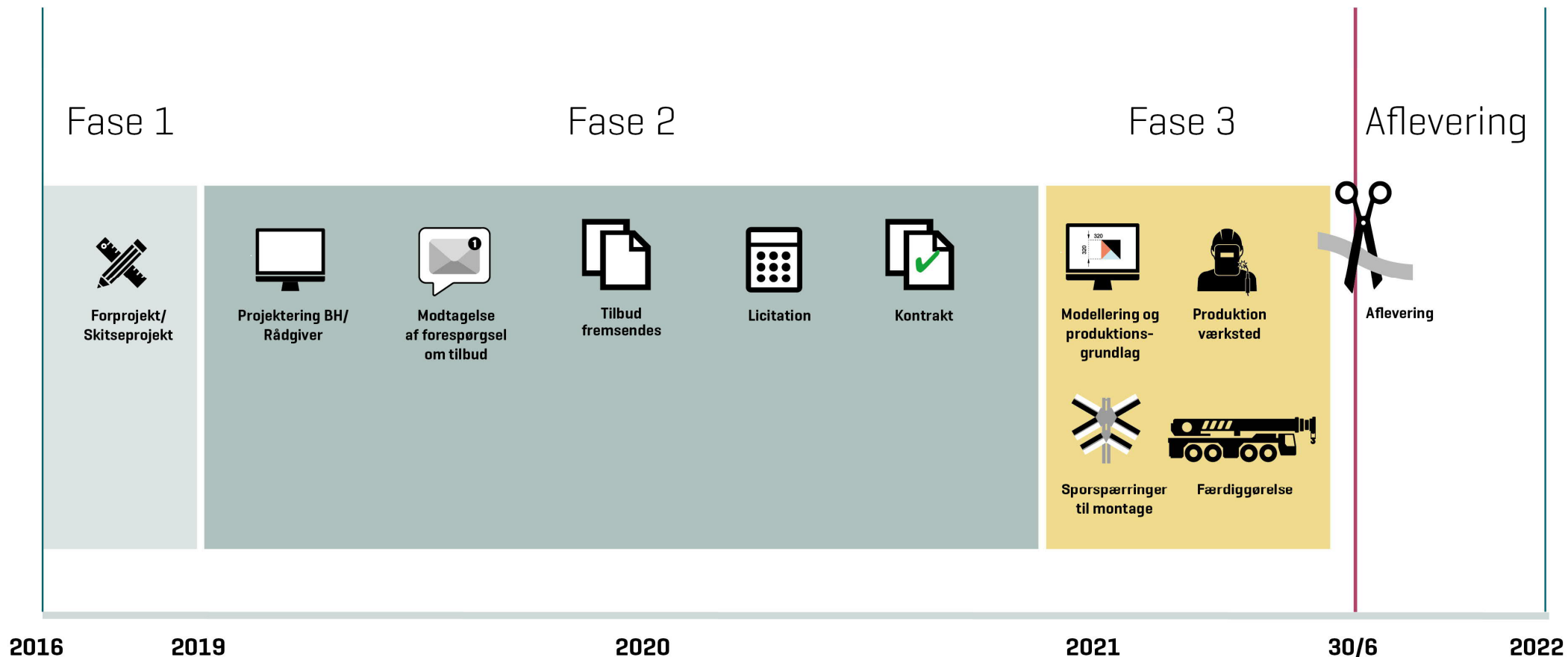
RAMBOLL



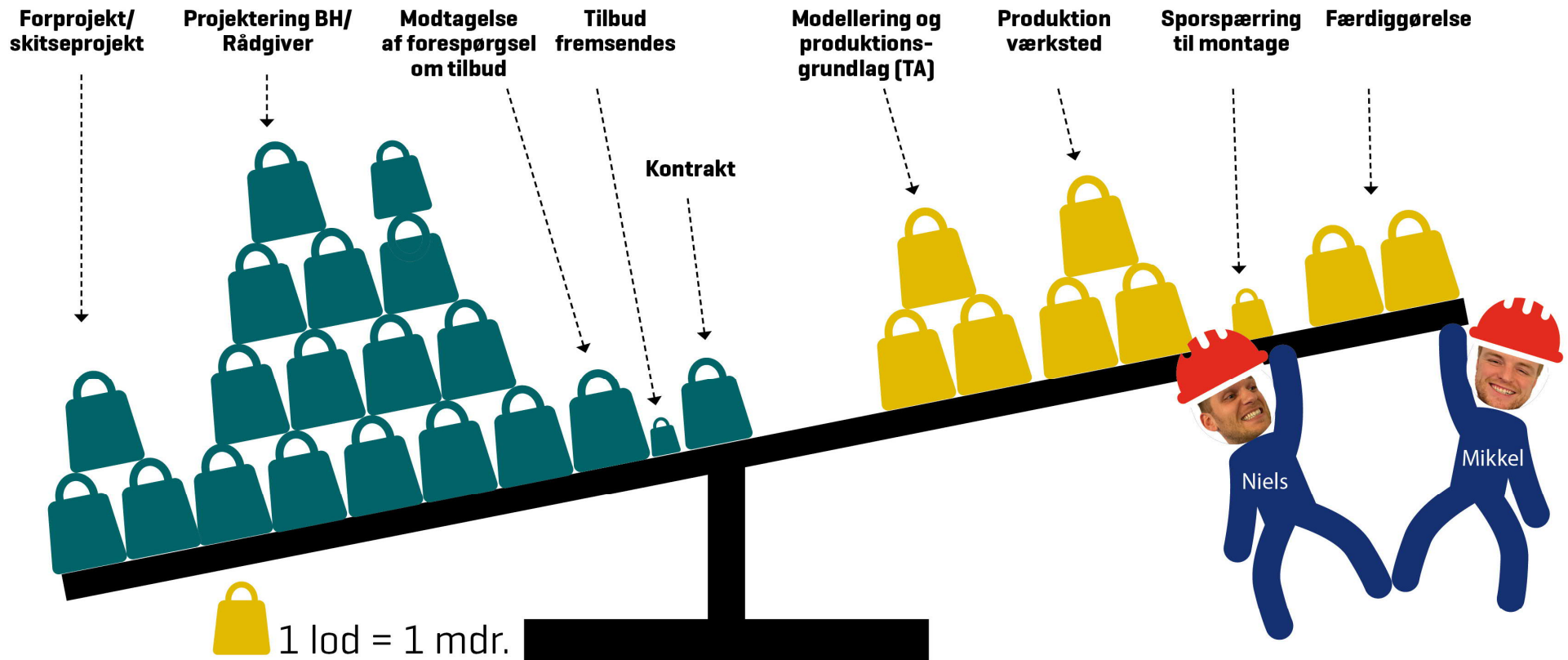
Dissing+Weitling



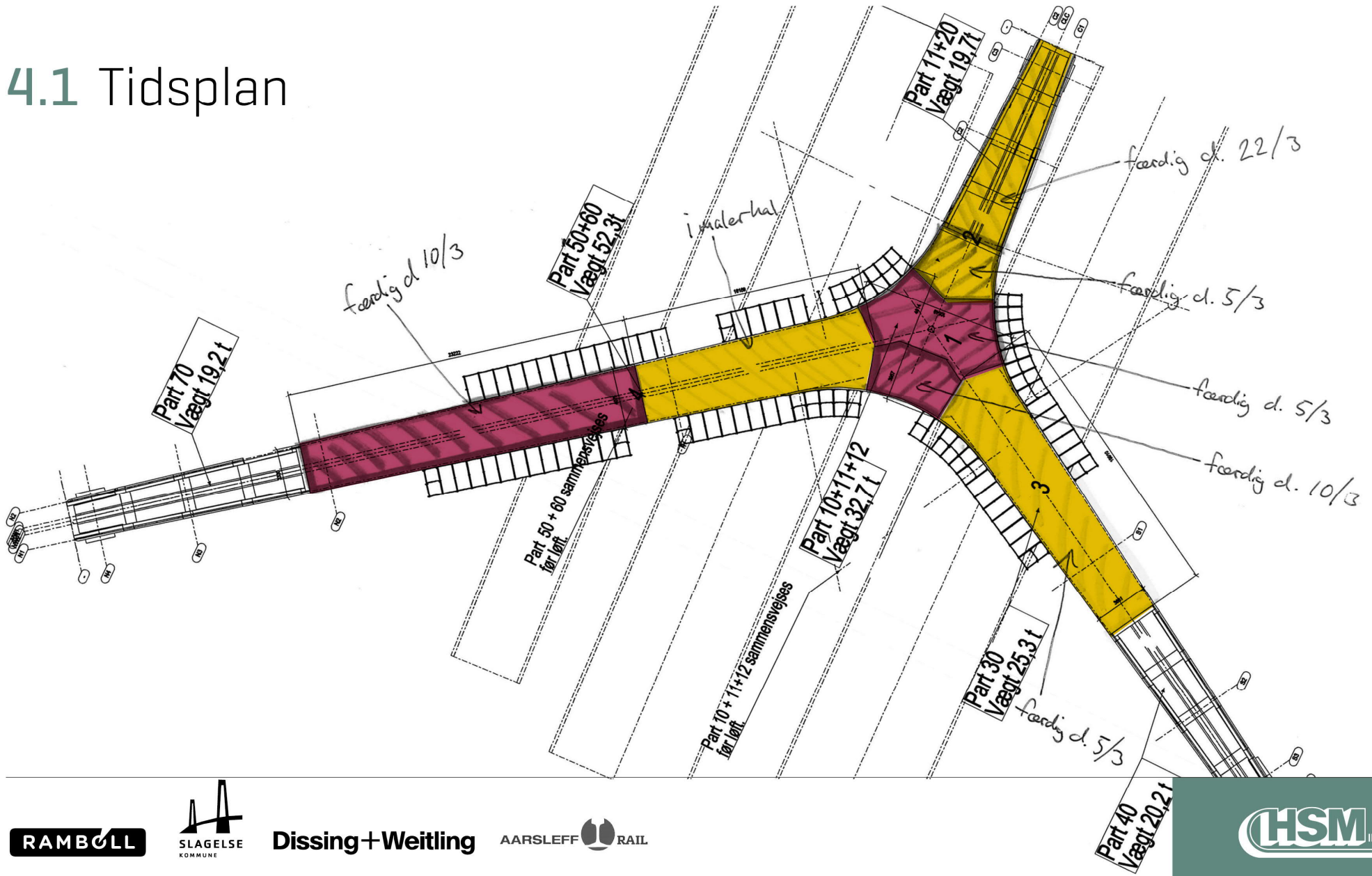
4.0 Tidsplan



4.0 Tidsforbrug



4.1 Tidsplan



5.0 Geometri & produktionsteknik



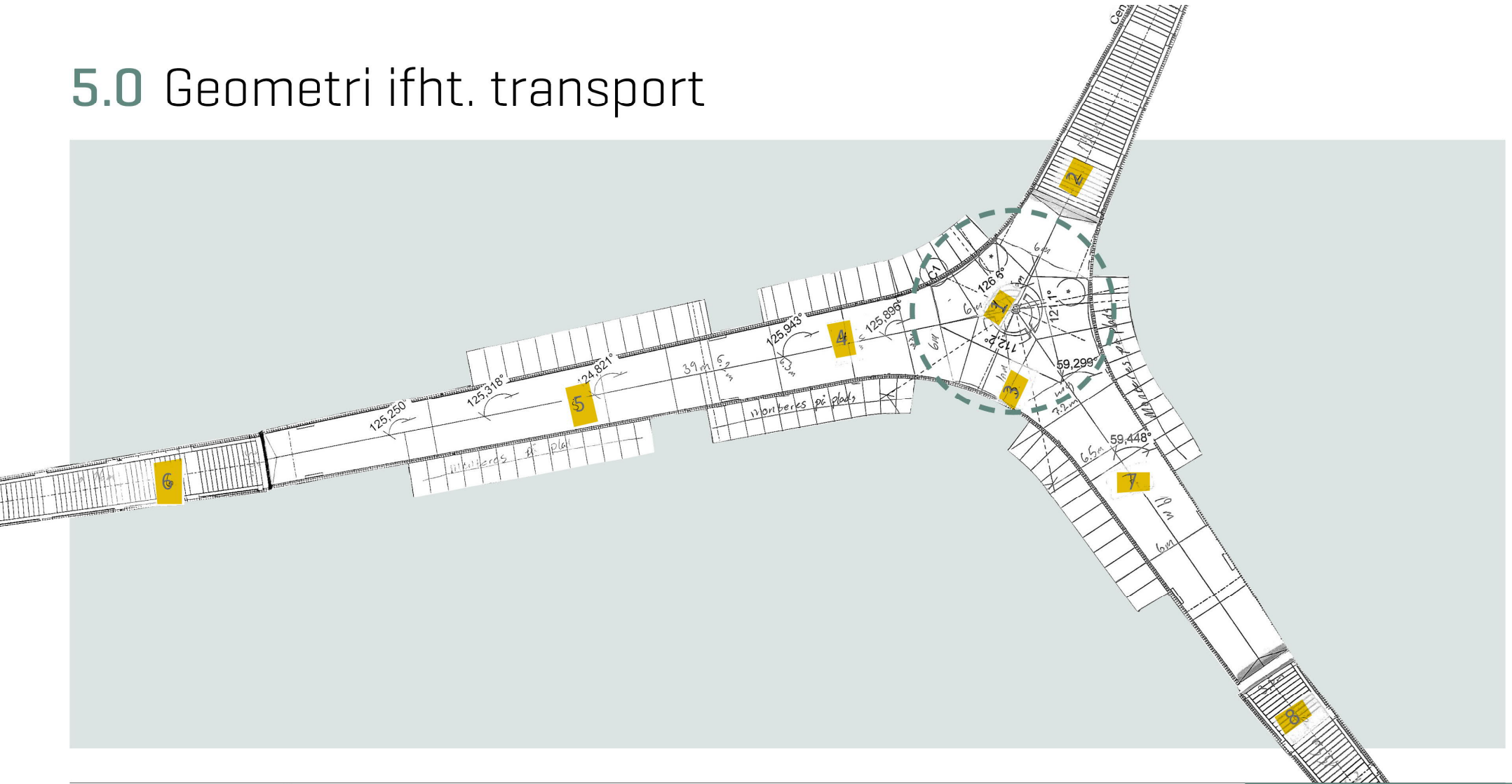
RAMBOLL



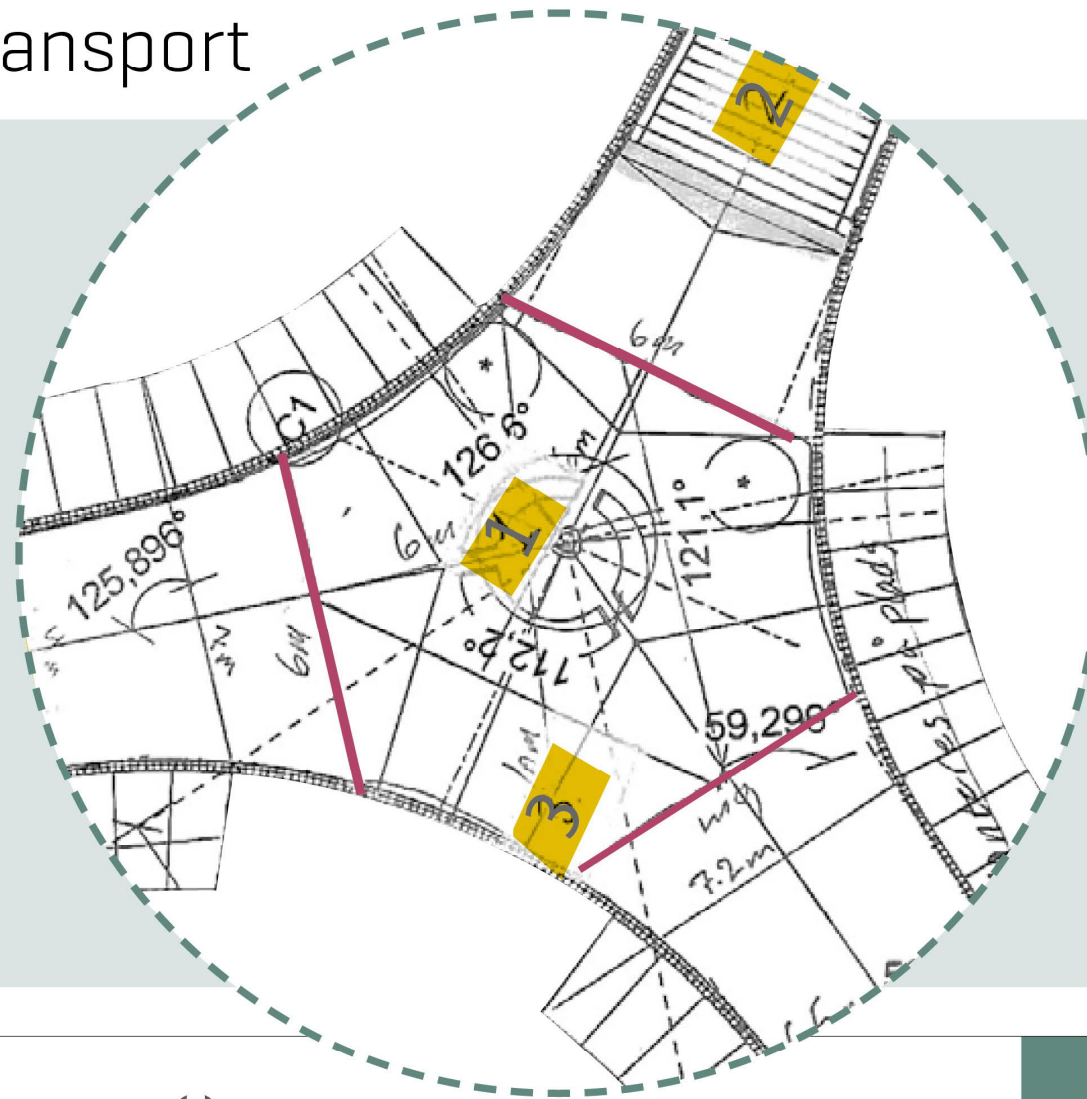
Dissing+Weitling



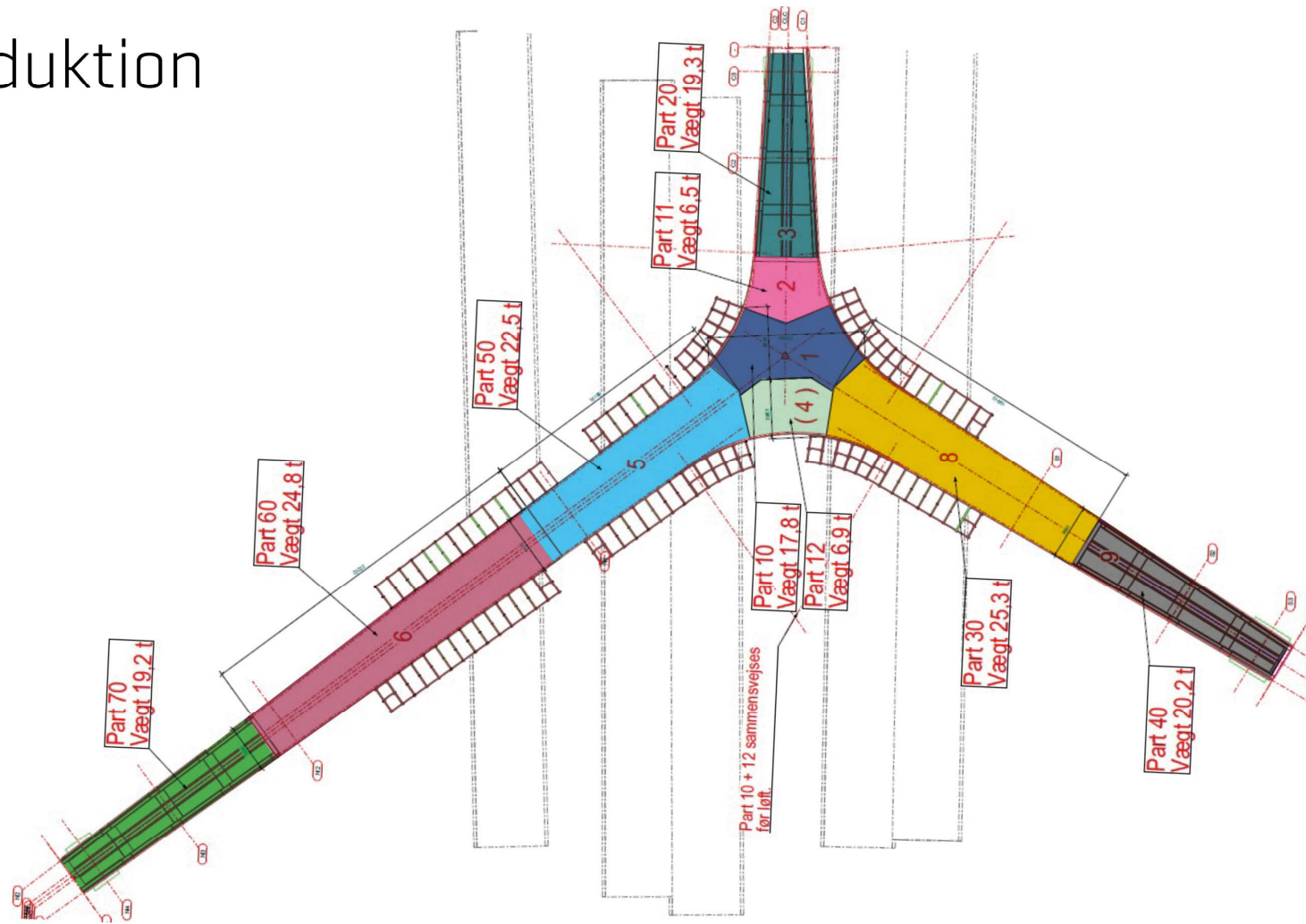
5.0 Geometri ifht. transport



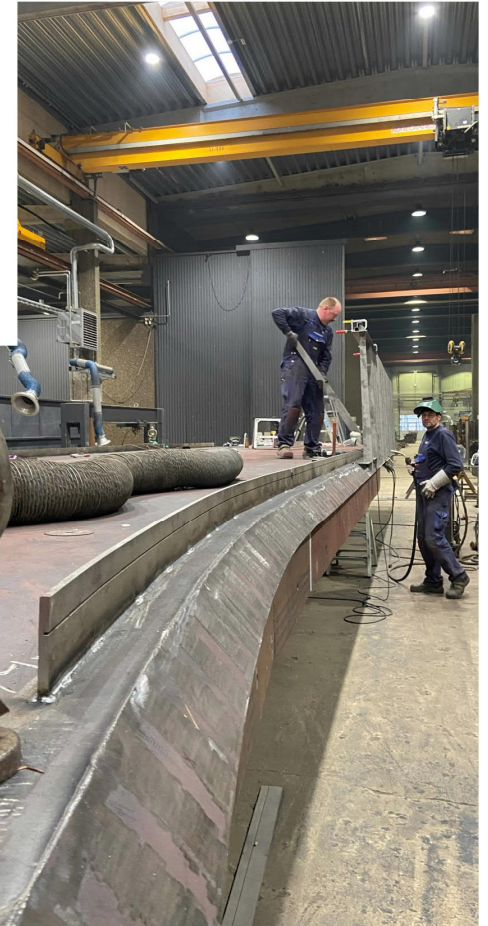
5.0 Geometri ifht. transport



5.1 Produktion



5.1 Produktion



RAMBOLL



Dissing + Weitling

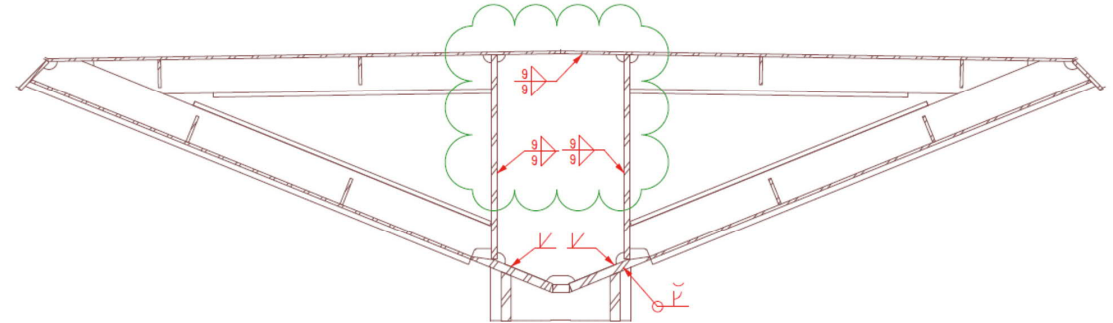
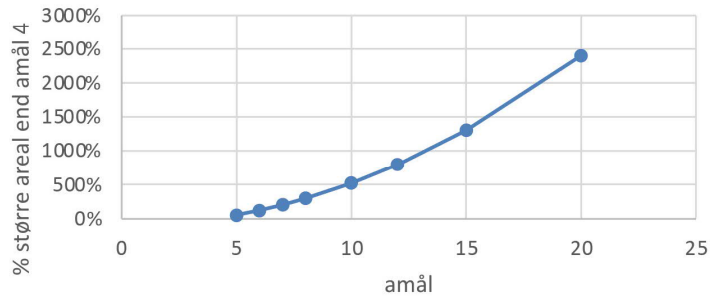


5.2 Svejseteknik

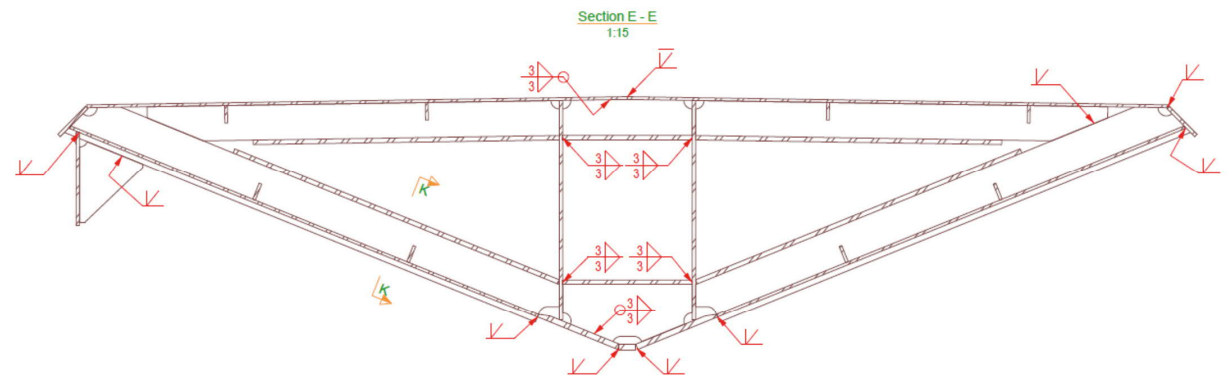
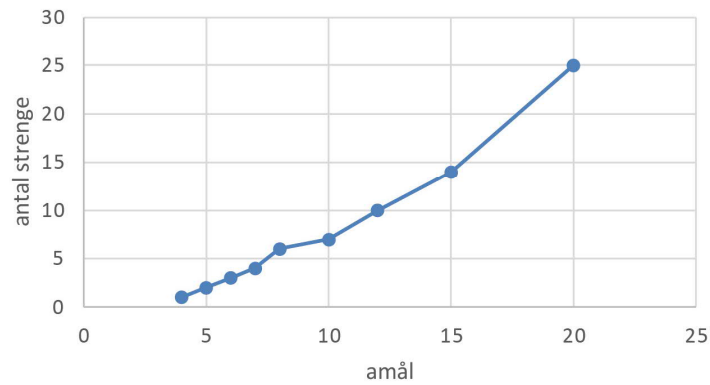


5.2 Svejseteknik

% større areal end amål 4

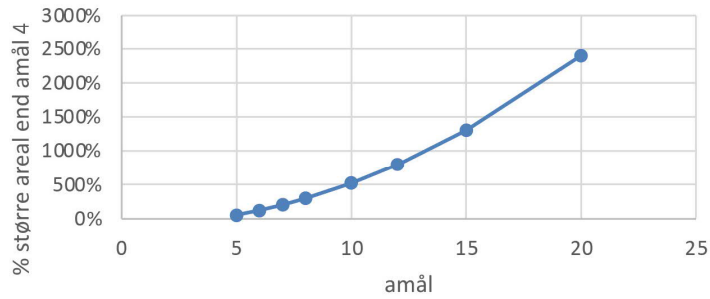


Antal streng

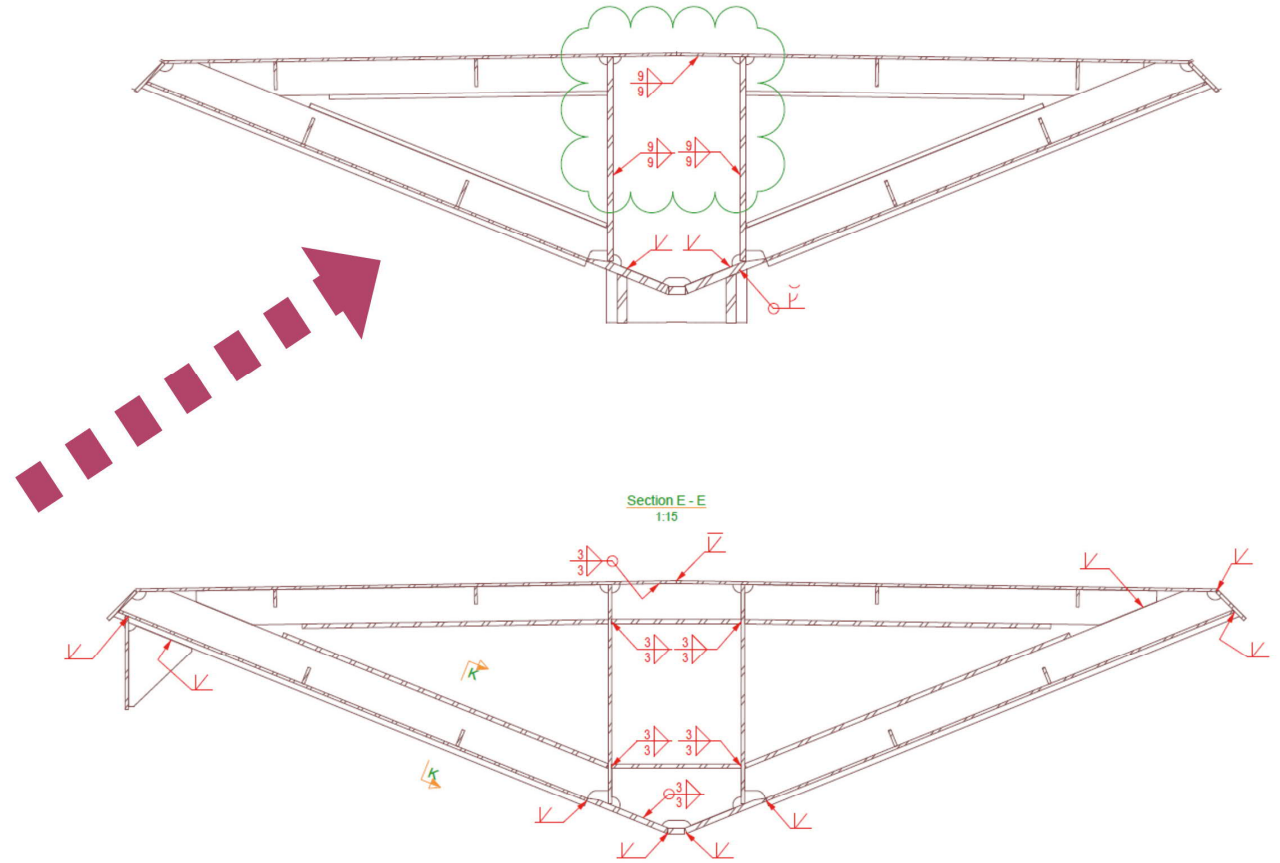
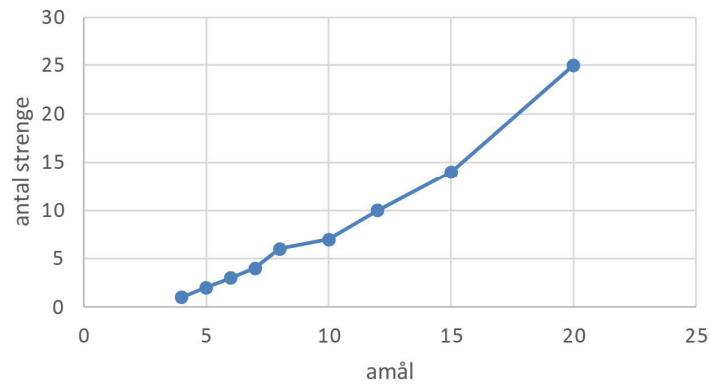


5.2 Svejseteknik

% større areal end amål 4

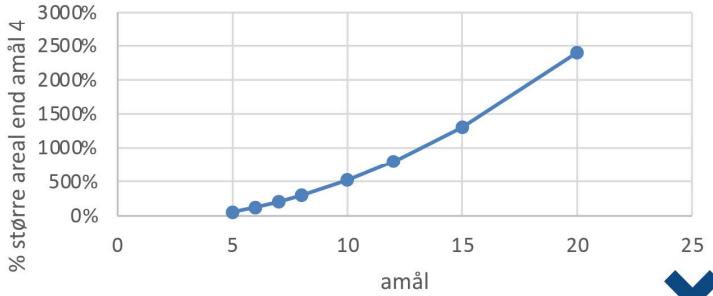


Antal strenge

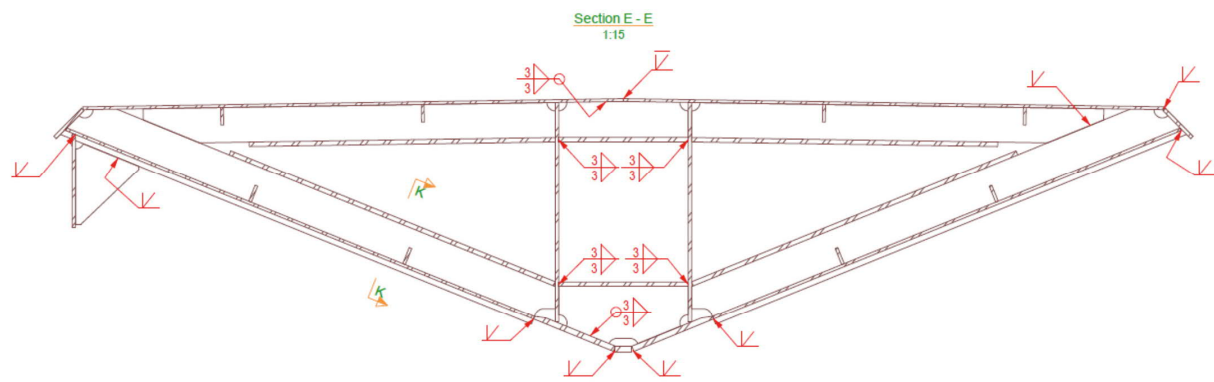
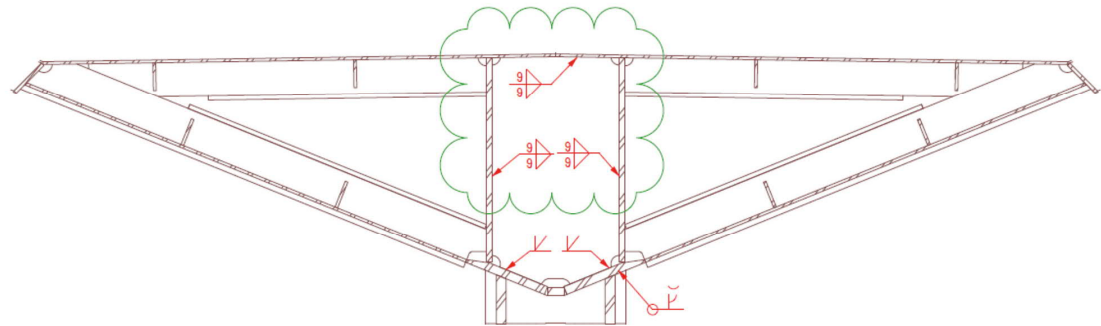
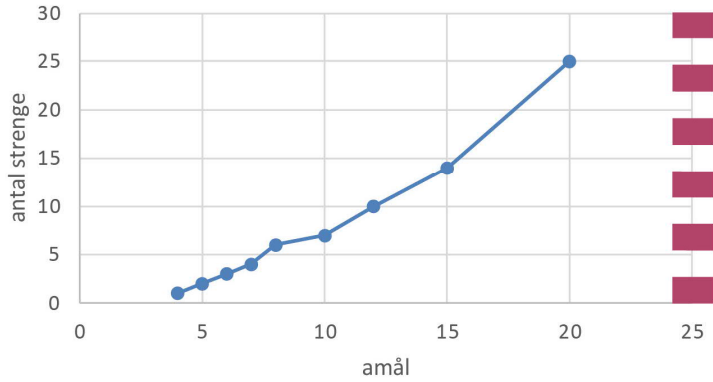


5.2 Svejseteknik

% større areal end amål 4

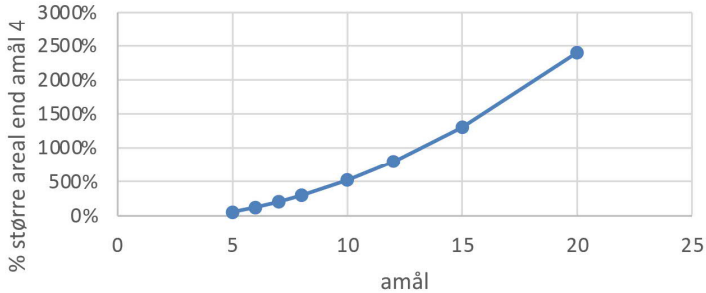


Antal strenge

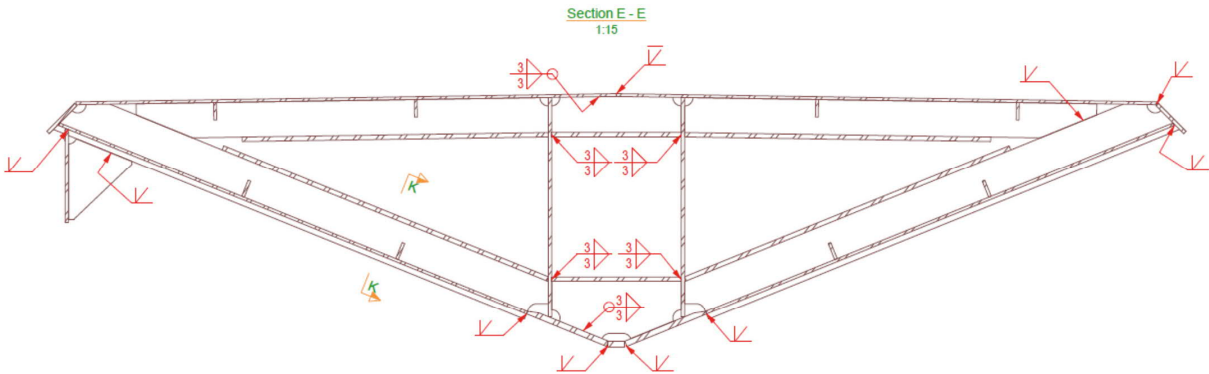
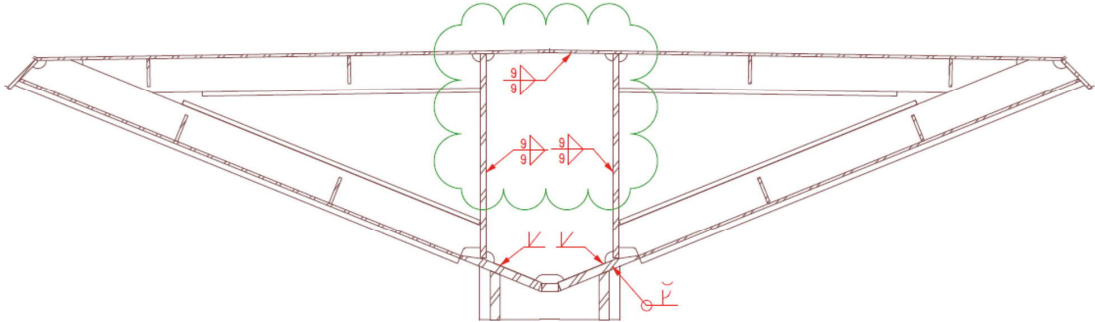
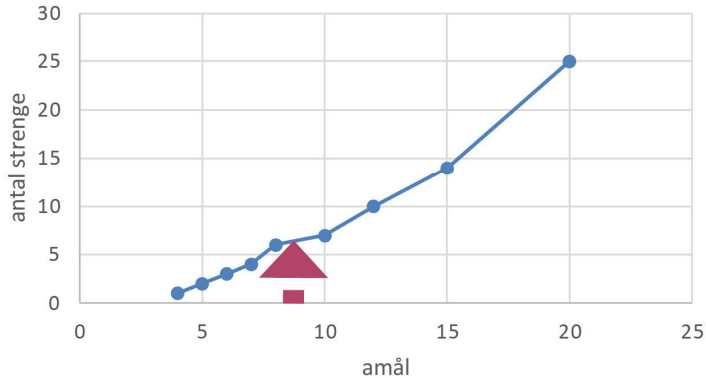


5.2 Svejseteknik

% større areal end amål 4



Antal strenge



5.2 Svejseteknik



5.2 Svejseteknik



5.2 Svejseteknik



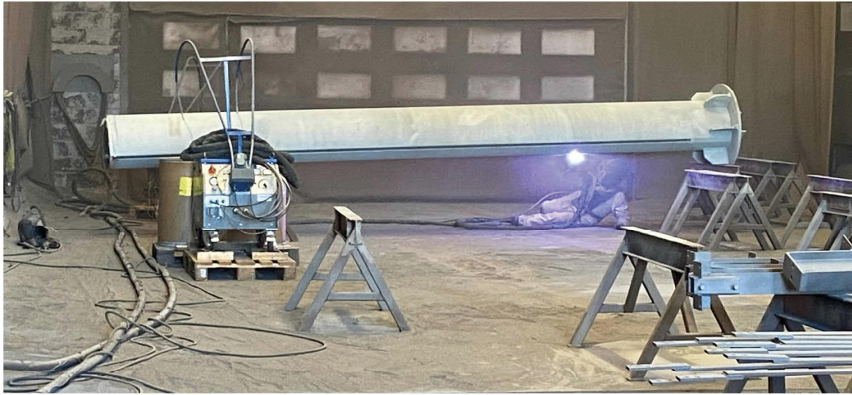
5.3 Transport



6.0 Overfladebehandling



6.0 Overfladebehandling



Totalt overfladebehandlet areal
10.500 kvm

6.1 Kunststofbelægning



6.1 Kunststofbelægning



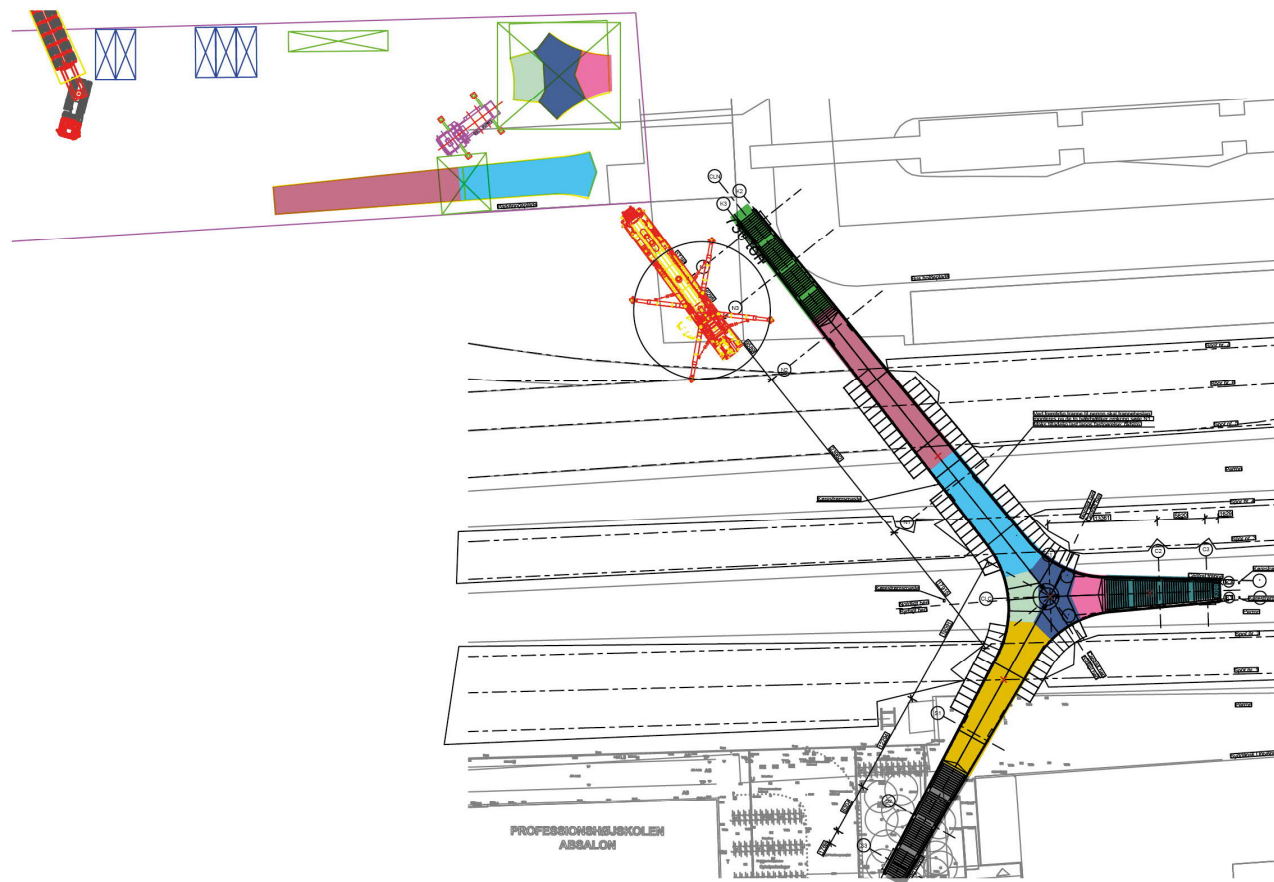
6.2 ...intet er umuligt!



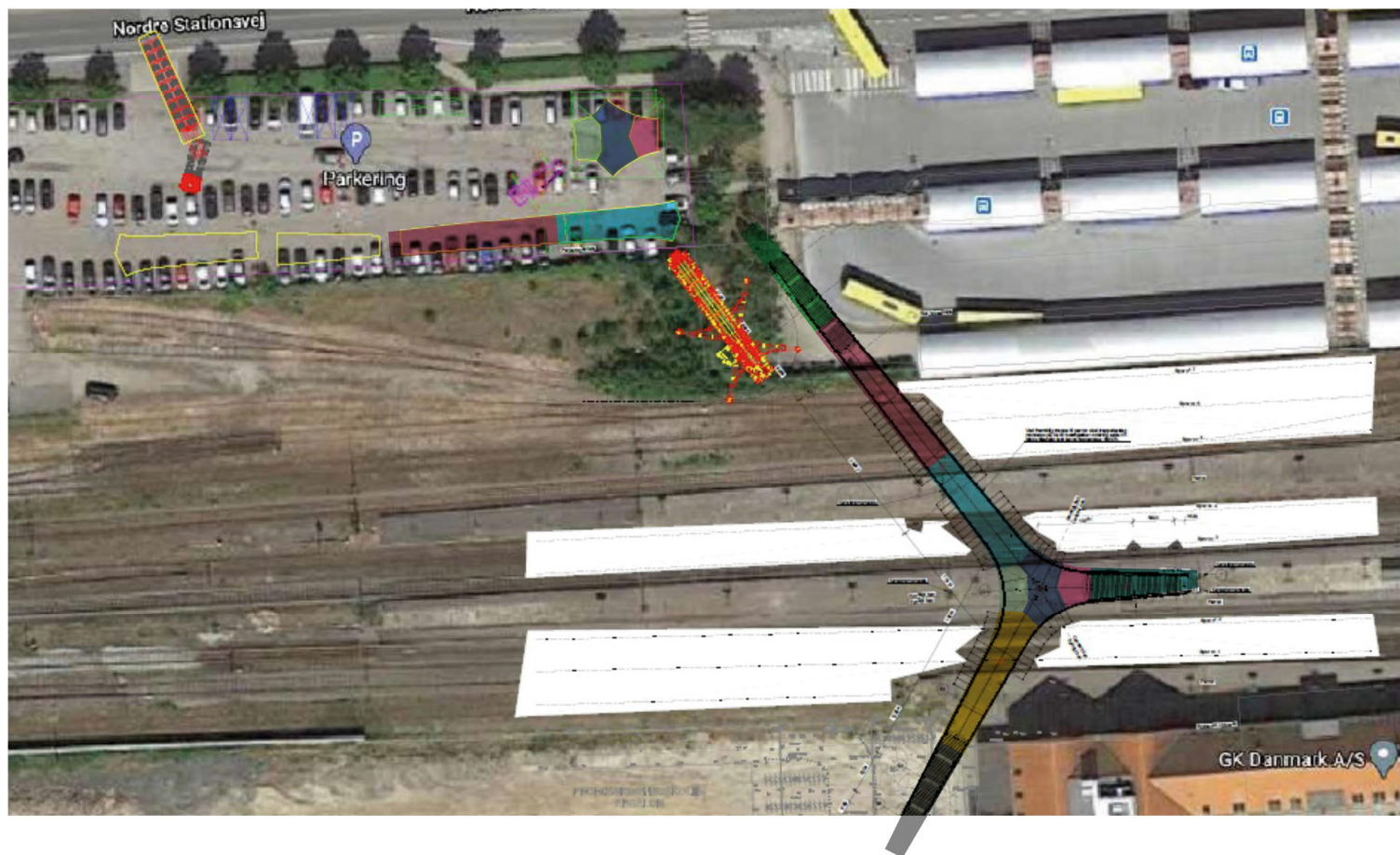
7.0 Montage | Forberedelse



7.0 Montage | Forberedelse byggeplads



7.0 Montage | Forberedelse byggeplads



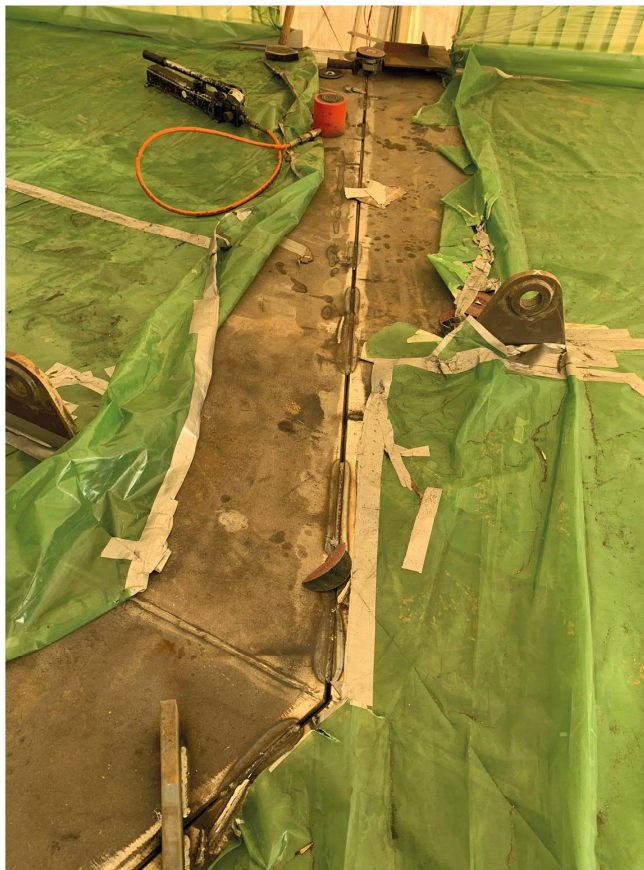
RAMBOLL



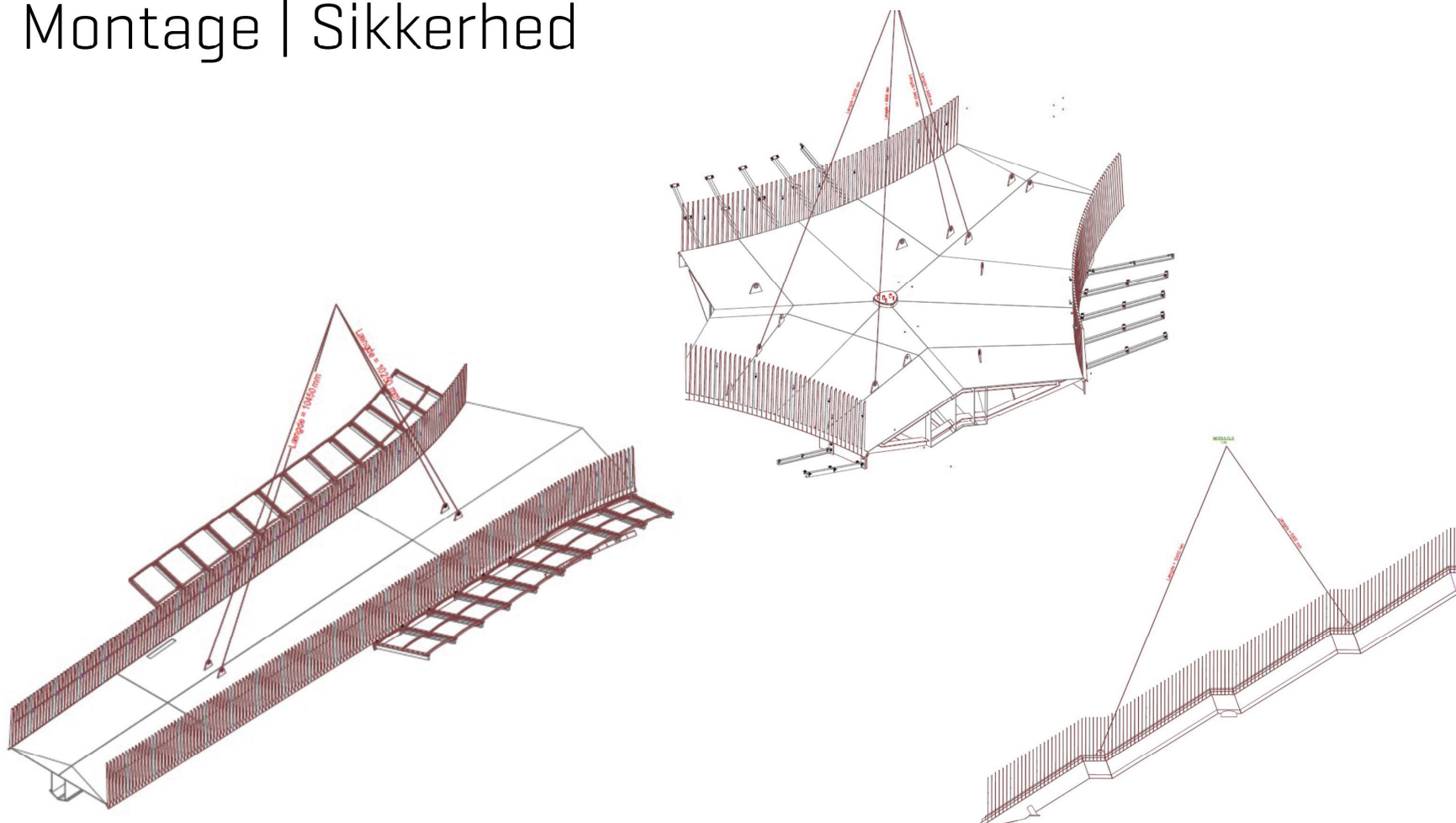
Dissing+Weitling



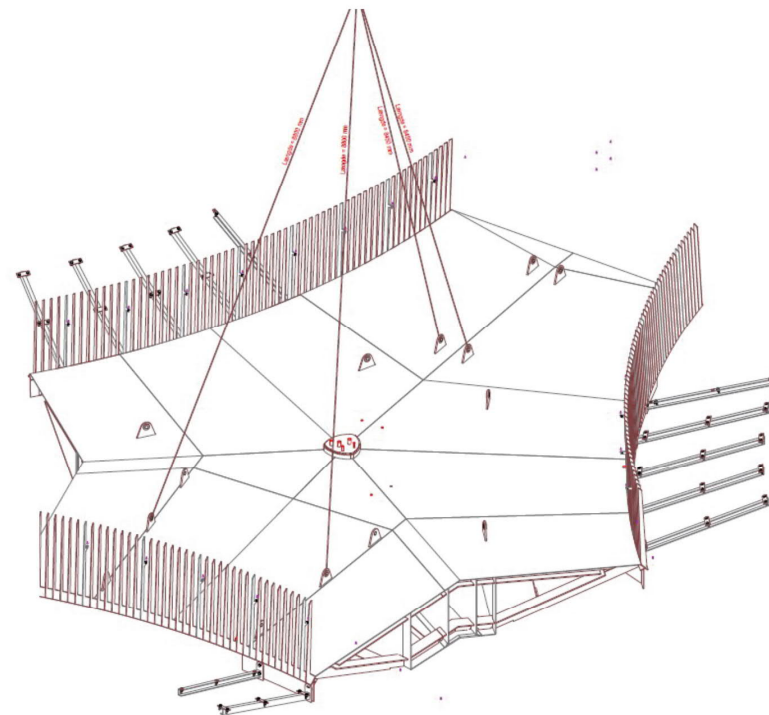
7.0 Montage | Forberedelse samling



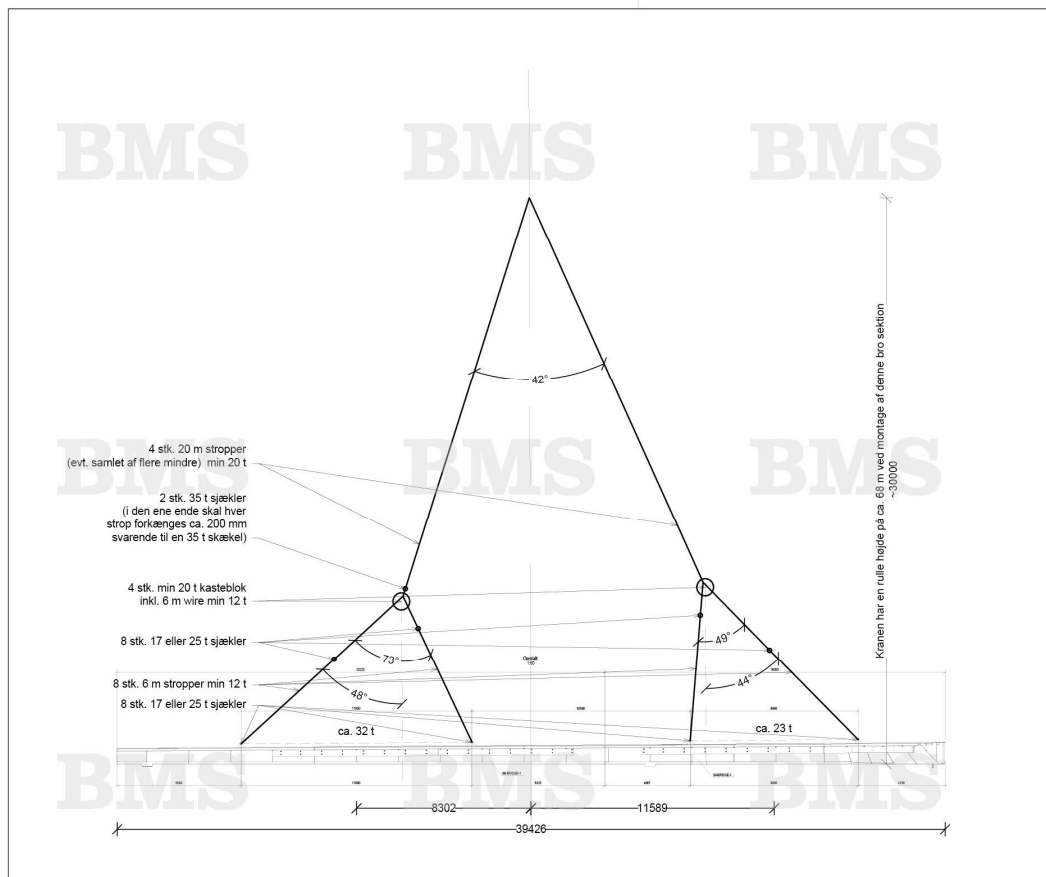
7.1 Montage | Sikkerhed



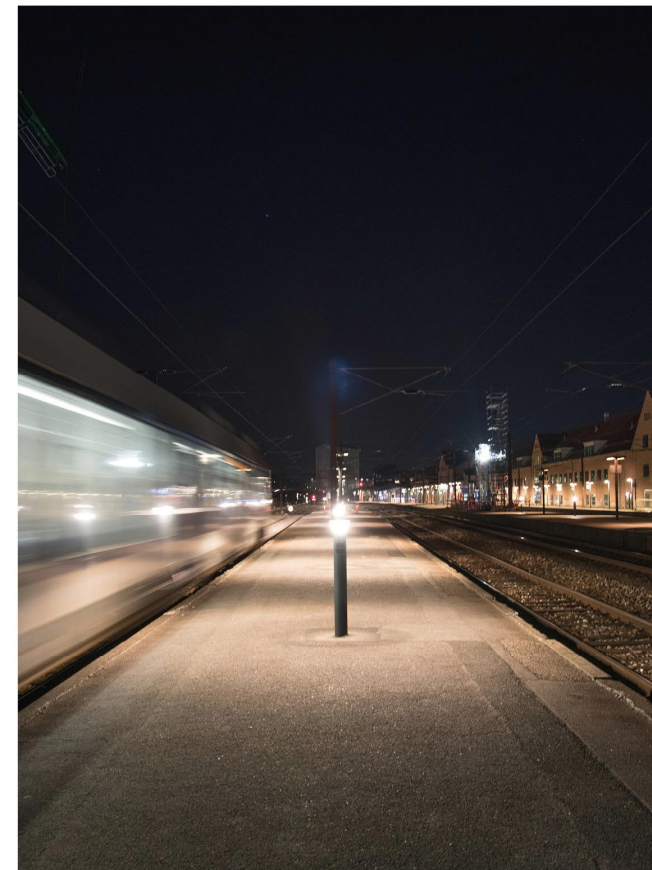
7.1 Montage | Sikkerhed



7.1 Montage | Sikkerhed



7.1 Montage | Sikkerhed



RAMBØLL



Dissing+Weitling



7.2 Montage | Logistik



RAMBOLL



Dissing+Weitling



7.2 Montage | Første løft



7.2 Montage | Kran over spor



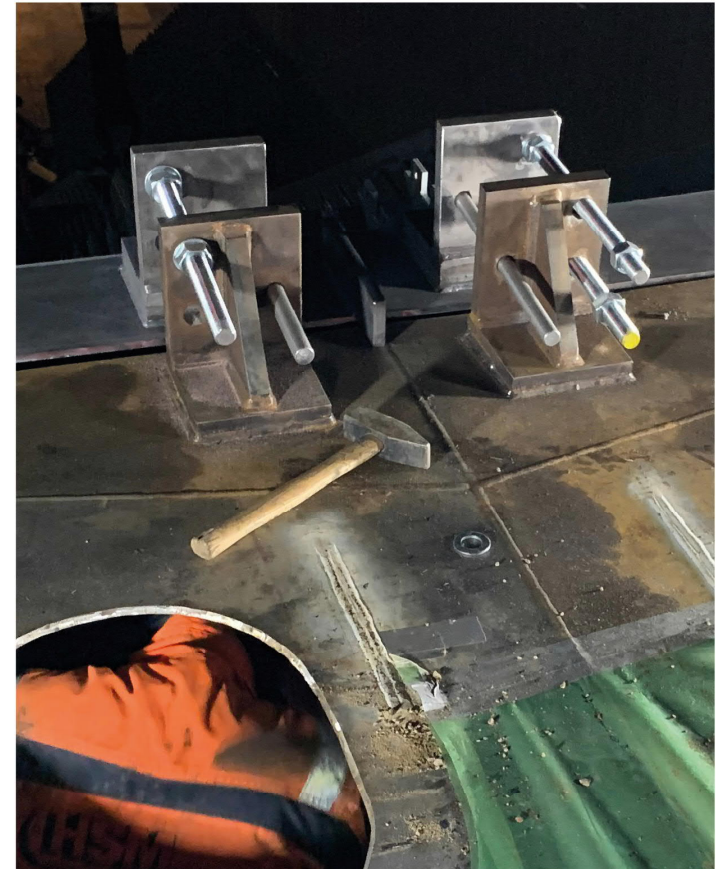
RAMBOLL



Dissing+Weitling



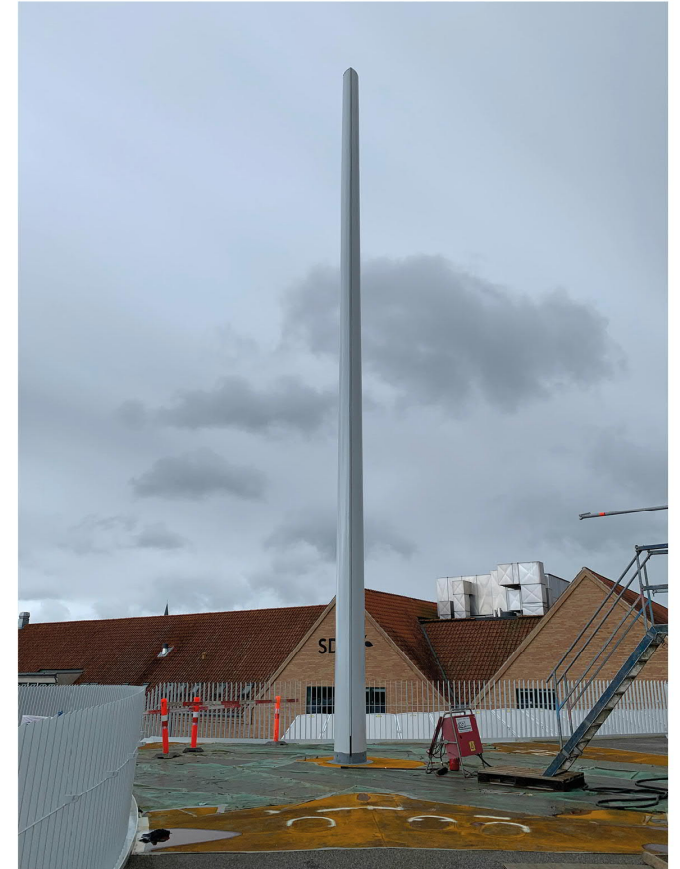
7.3 Montage | Svejsning



7.3 Montage | Svejsning



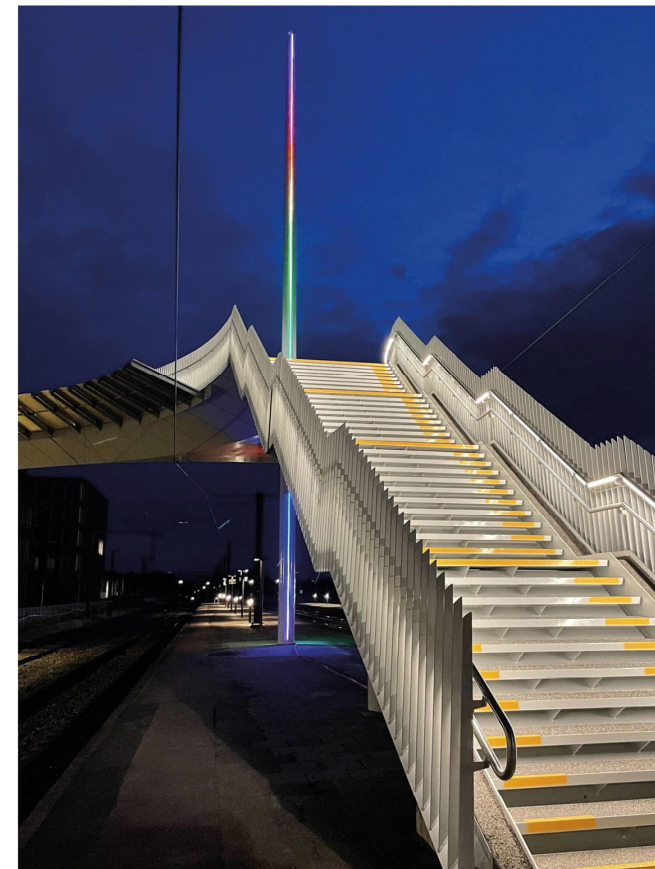
7.3 Montage |



7.4 Timelaps



8.0 Færdiggørelse



RAMBOLL



Dissing+Weitling

